

# MOVIMIENTO MELÓDICO

## USANDO NOTAS DE PASO

F. D'Antoni

C

TC TC TC TC

C

TC TC TC TC

## NOTAS DE APROXIMACIÓN

From Below

C

TC TC TC

C

TC TC TC

From Above

C

TC TC TC

C

TC TC TC

## ENCUADRES DE 2 NOTAS

From Below

C



C



From Above

C



C



## ENCUADRES DE 3 NOTAS

C



C



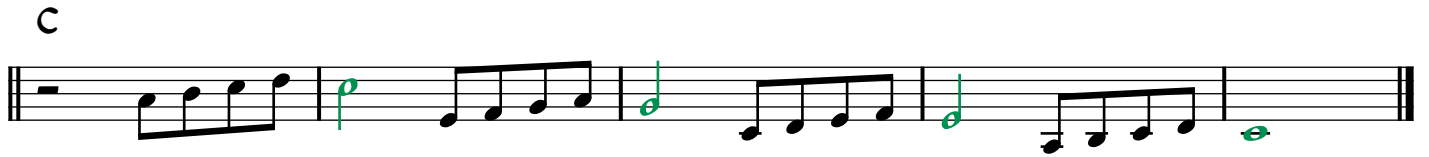
C



C



# ENCUADRES DE 4 NOTAS



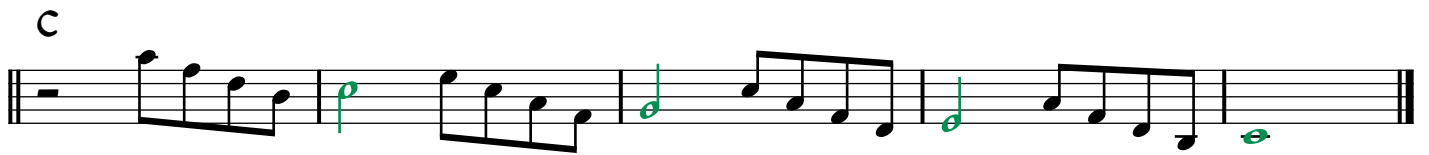
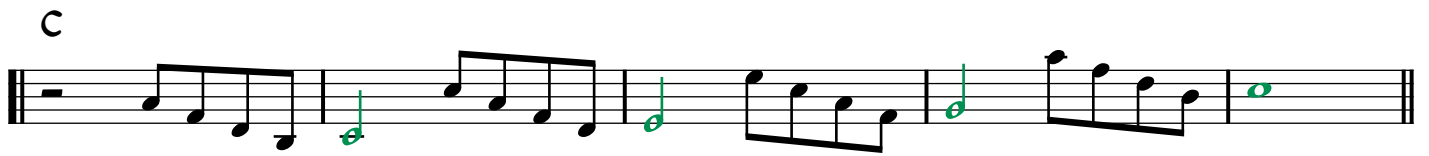
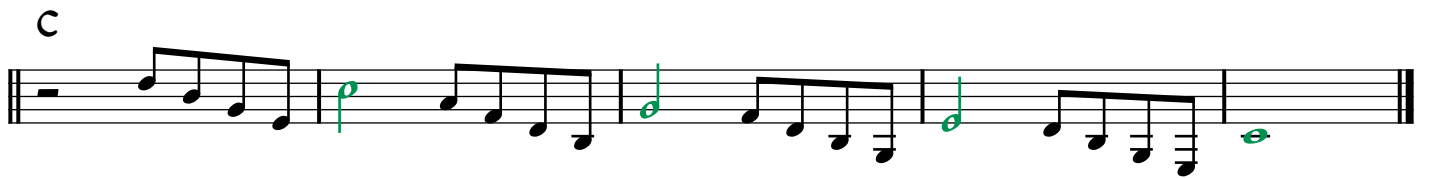
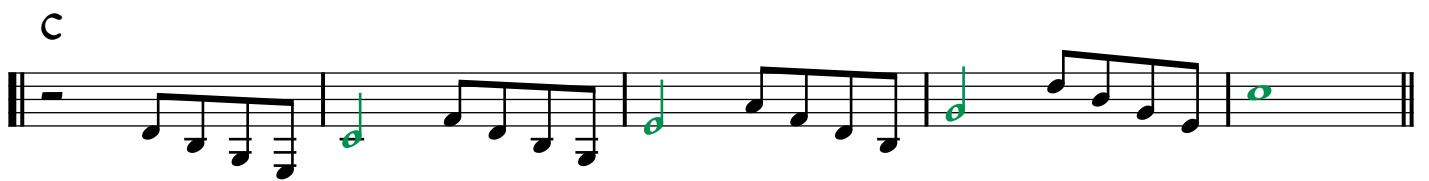
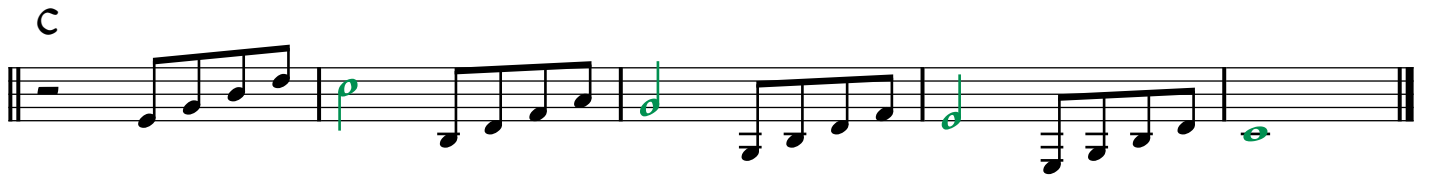
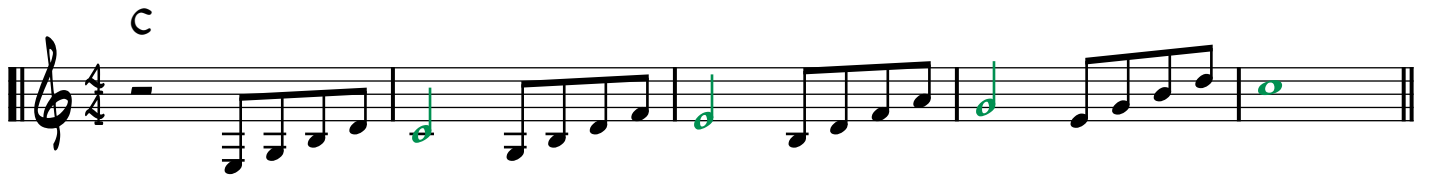
## SALTOS DE INTERVALOS

Two staves of music in C major, 4/4 time. The first staff is in treble clef and the second in bass clef. Both staves start with a common time signature 'C'. The melody consists of eighth and quarter notes. Green dots are placed above or below specific notes to highlight interval jumps: C4 to E4, G4 to B4, D5 to C5, and F4 to A4 in the treble; and G2 to B2, D3 to F3, A2 to C3, and E2 to G2 in the bass.

## ARPEGGIOS DE TRÍADA

Four staves of music in C major, 3/4 time. Each staff starts with a common time signature 'C'. The melody consists of eighth and quarter notes. Green dots are placed above or below specific notes to highlight triad arpeggios: C4-E4-G4, F4-A4-C5, D4-F4-A4, and G4-B4-D5 in the treble; and G2-B2-D3, F2-A2-C3, E2-G2-B2, and C3-E3-G3 in the bass.

# ARPEGGIOS DE CUATRÍADAS



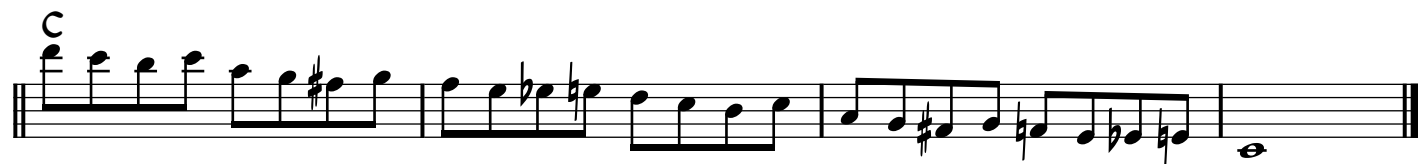
## ARPEGGIOS POR CENTROS ARMÓNICOS

Two staves of musical notation in 3/4 time, key of C major. The first staff is in treble clef and the second in bass clef. Both staves feature a sequence of arpeggiated chords, each marked with a '3' above the notes, indicating a triplet. The chords are: C major (C-E-G), F major (F-A-C), Bb major (Bb-D-F), Eb major (Eb-G-Bb), Ab major (Ab-C-Eb), and Gb major (Gb-Bb-Db). The sequence starts with a whole note chord and continues with eighth notes.

## APROXIMACIÓN CROMÁTICA

Three systems of musical notation in 4/4 time, key of C major. Each system consists of a treble clef staff and a bass clef staff. The first system shows a chromatic scale in the bass clef (C-Bb-A-G-F-Eb-D-C) with notes marked 'TC' (Tercio). The second system shows a chromatic scale in the treble clef (C-Bb-A-G-F-Eb-D-C) with notes marked 'TC'. The third system shows a chromatic scale in the bass clef (C-Bb-A-G-F-Eb-D-C) with notes marked 'TC'. The notes are marked with green dots and stems.

# ENCUADRES CROMÁTICOS



# DESCUENTO

## OFERTA EXCLUSIVA

**AHORRA 25%**

en cualquier suscripción

Canjea la oferta en:  
[InsidePiano.com/es/login](https://InsidePiano.com/es/login)

**CÓDIGO: 25KEYS**

# DESCUENTO